

Fitout Contracting
Natural Stone
Architectural Finishing
Machinery & Equipment



note:

This is a presentation with no commercial value.
This is not a legal document . All copyrights are protected by
Law



The Expert in Architectural Supply and Contracting.





CONSOL Architectural Contracting

Welcome to **CONSOL FITOUT**, your premier partner in architectural fit-out solutions.

As a leading architectural fit-out company, we take pride in our expertise, commitment to quality, and dedication to client satisfaction.

At **CONSOL FITOUT**, we understand that every space has its unique purpose and character. Whether it's an office, retail outlet, hospitality venue, or residential project, we believe that the interior should reflect the vision and objectives of our clients while creating a harmonious blend of functionality and style. Our mission is to bring your vision to life, ensuring that each project is executed with meticulous attention to detail and craftsmanship.

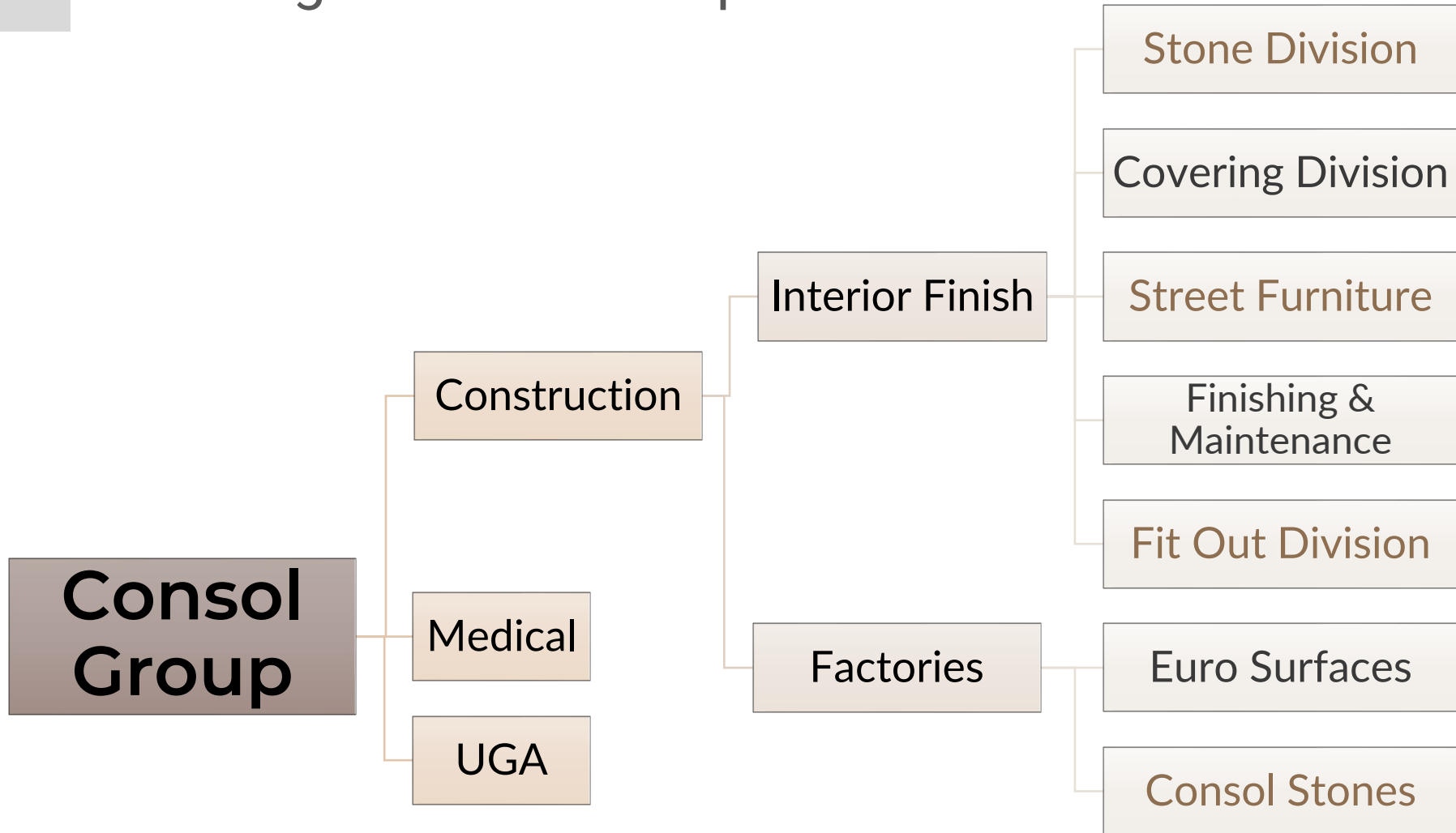
With a team of highly skilled architects, designers, engineers, and project managers, we possess the expertise and creativity to transform any space into an exceptional work of art. From concept development and space planning to material selection and construction, we offer end-to-end services tailored to meet your specific requirements. We collaborate closely with our clients, listening to their needs and objectives, and providing innovative solutions that align with their vision and budget. Thank you for considering **CONSOL FITOUT** as your partner for your upcoming project. We look forward to the opportunity to collaborate with you, providing unmatched expertise, creativity, and professionalism to bring your vision to reality.

Management

Introduction



CONSOL Organizational Map





CONSOL Company Review

CONSOL FIT OUT is a leading interior fit out company specializing in delivering exceptional interior design and construction solutions. Our experienced team of professionals combines creativity, technical expertise, and an understanding of our clients' needs to deliver customized solutions for residential, commercial, and hospitality projects.

Services Offered:

Interior Fit Out: We excel in transforming empty spaces into vibrant and functional interiors. Our skilled craftsmen and project managers work meticulously to deliver high-quality fit out solutions, including partitioning, flooring, ceilings, joinery, electrical, plumbing, and HVAC installations.

Project Management: Our dedicated project management team ensures smooth and efficient execution of every project. We oversee all aspects of the project, from initial planning to final completion, including budgeting, scheduling, procurement, coordination, and quality control.

Furniture and Fixtures: We offer a comprehensive range of furniture and fixtures, carefully selected to complement the overall design and enhance the functionality of the space. From custom-made pieces to curated collections, we provide a variety of options to suit every project's requirements.

Renovation and Refurbishment: Our expertise extends to renovation and refurbishment projects, where we breathe new life into existing spaces. Whether it's a residential apartment, office, retail store, or hospitality establishment, we rejuvenate interiors while maintaining the desired aesthetics and functionality.

Clientele:

We have successfully completed projects for a diverse range of clients, including homeowners, corporate offices, retail establishments, hotels, restaurants, educational institutions, healthcare facilities, and more. Our commitment to delivering excellence has earned us a reputation for reliability, professionalism, and outstanding customer service.

CONSOL Services & Facilities

Since 2010, **CONSOL** has been executing projects across a wide variety of sectors , including hospitality, stadium, transportation, and Commercial buildings.

We tailor the best approach according to the needs, budget, and expectations to our clients. We have a diverse background in Hospitality, Healthcare, educational and commercial sectors and experienced to succeed for each of these client bases. Since our inception in the Qatar Market,

CONSOL is positioned in the high-quality sector catering for Mega Projects and Special Projects. This Sector is one which requires solid financial position, strong Engineering team, investments in Quality Control and Safety Departments in addition to corporate and project efficient organization structure.



Natural Stone

Supply , Installation, Consultancy ,
Sourcing, Finishing & Maintenance

 **EUROSURFACES**

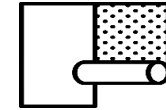
Engineered Stone

By RMC / Euro surfaces European Breton manufacturer of high-quality engineered marble – from the price/quality ratio likely the best material for vanity tops, floors or wall



Street Furniture

Street Furniture for streets, parks, campuses, transit, healthcare, retail, private residences.



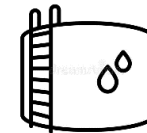
Wall / Floor Covering

Featuring over 150 designs and more than 2,000 colors – as well digitally printed customized options for tailor-made solutions



Custom Product

Acoustic Panels | Genuine Leather Panels | Sport Flooring | Tactile



Water Tanks

GRP Lining | GRP Sectional Tanks | Steel Sectional Tanks | Epoxy Paint



CONSOL Highlights

18
On going Projects

124
Completed Projects

13
Thirteen YEARS
OF EXPERIENCE

14
Management & Admin

18
Technical Team

124
Stone Division

84
Covering Division



CONSOL Operations

Portugal

RMC | Eurosurfaces
Portugal, S.A.
ار ام سي للرخام الصناعي
البرتغال



Qatar
Qatar CONSOL WLL
قطر كونسول

KSA

شركة كونسول العربية للمقاولات
المحدودة
CONSOL Arabia Contracting
WLL

CONSOL Clients - Hospitality



CONSOL Clients – Public Entities



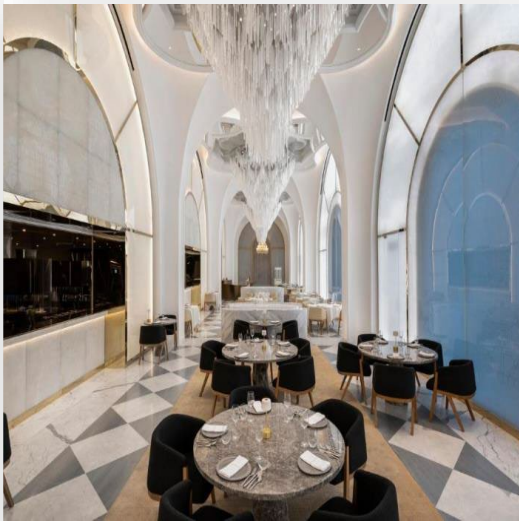
CONSOL Clients – Major Clients





2022 | Completed Project

Raffles Doha

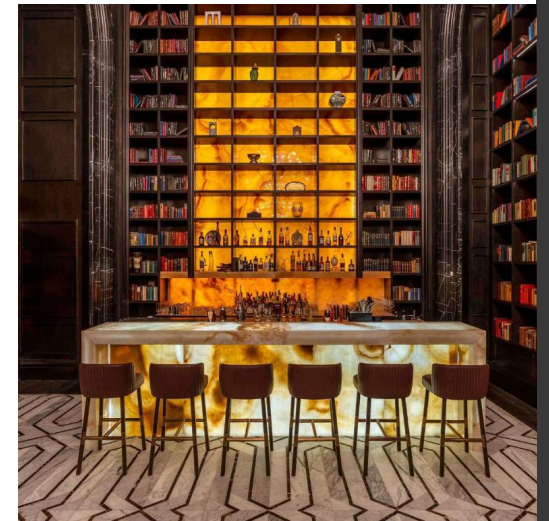
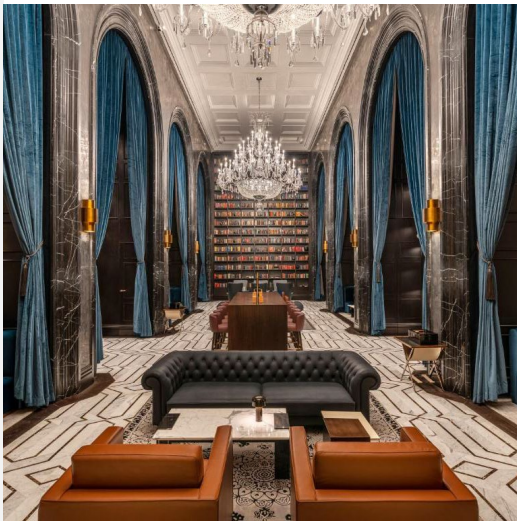
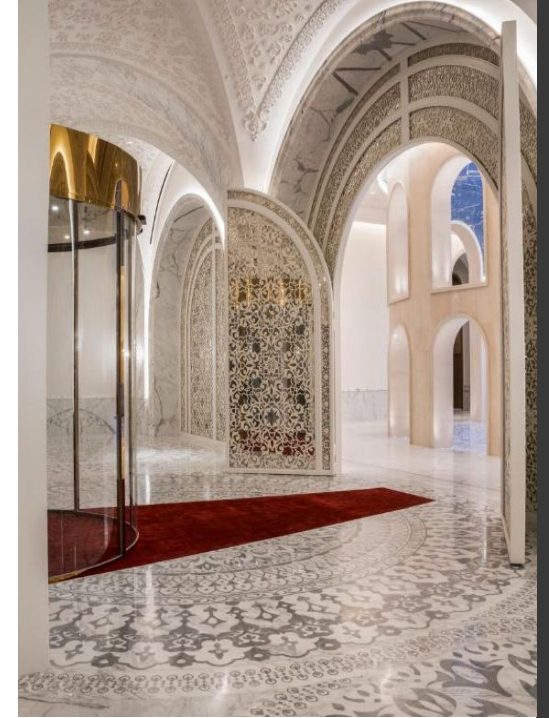


CONSOL
Architectural Contracting



2022 | Completed Project

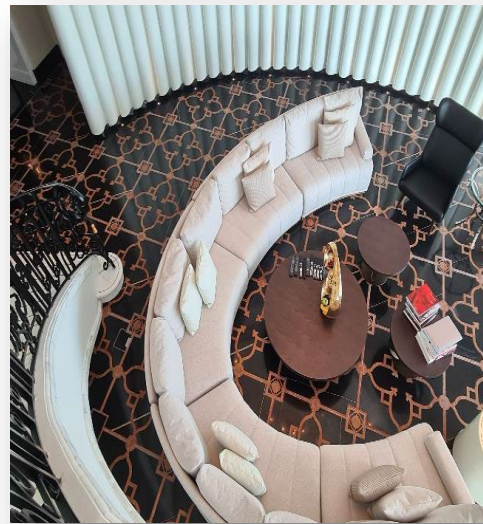
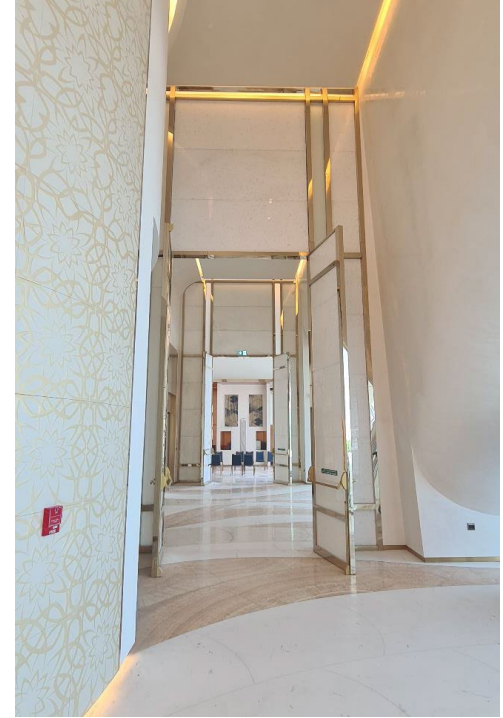
Raffles Doha



2022 | Completed Project

FAIRMONT Doha

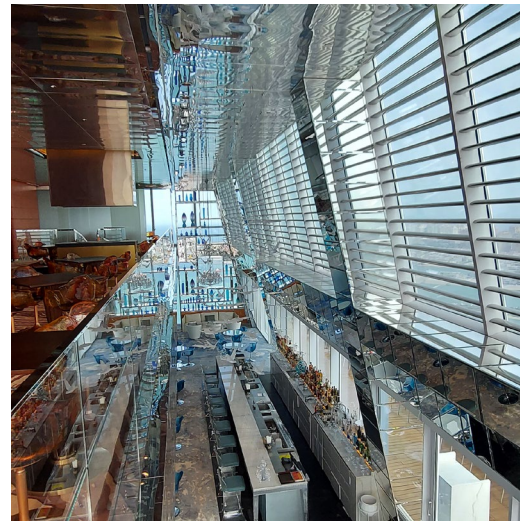
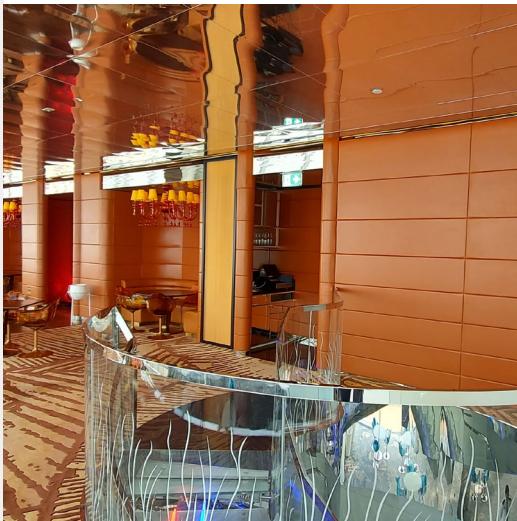
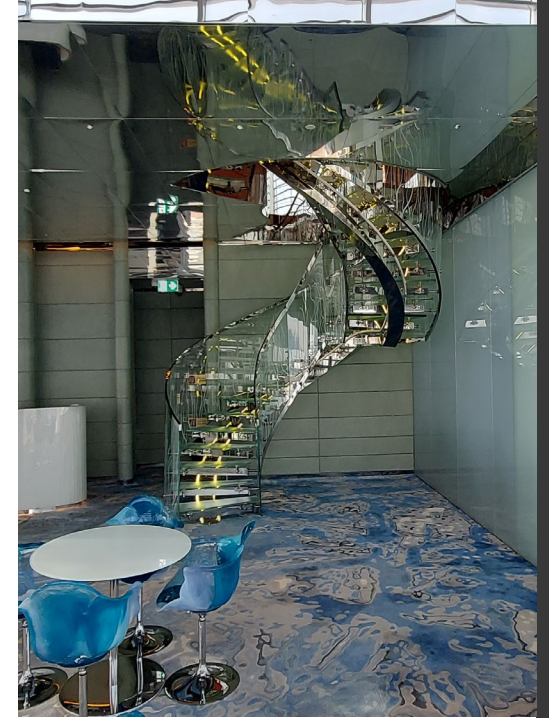
14





2022 | Completed Project

FAIRMONT Doha



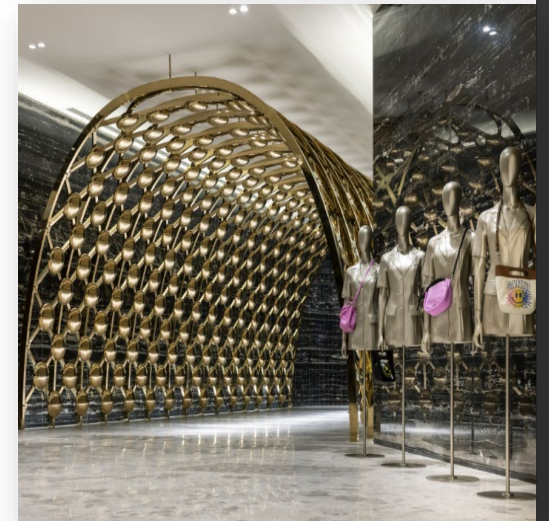
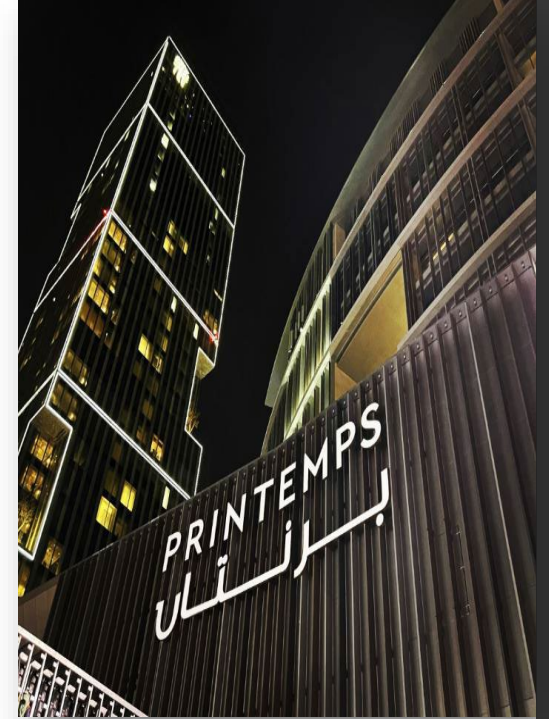
CONSOL
Architectural Contracting





2022 | Completed Project

Printemps

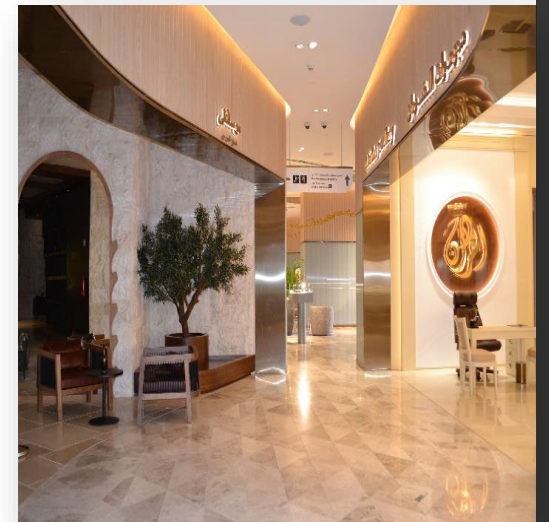
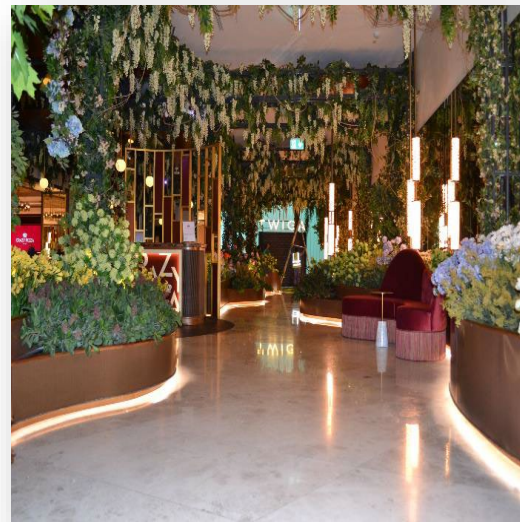
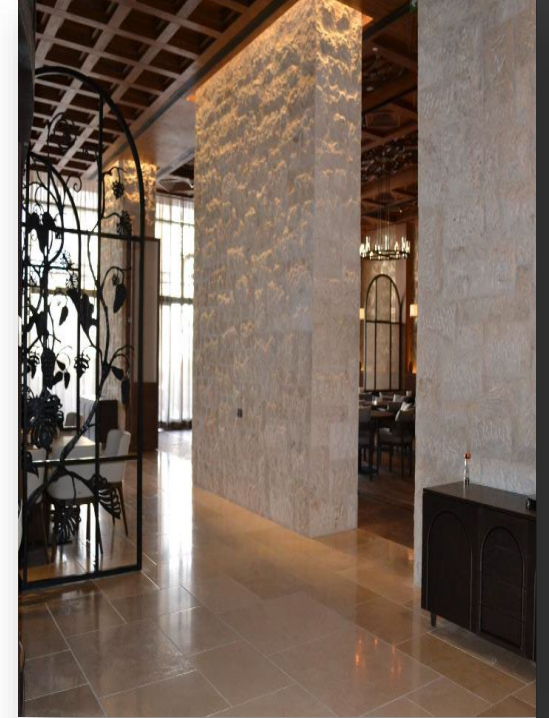


CONSOL
Architectural Contracting



2022 | Completed Project

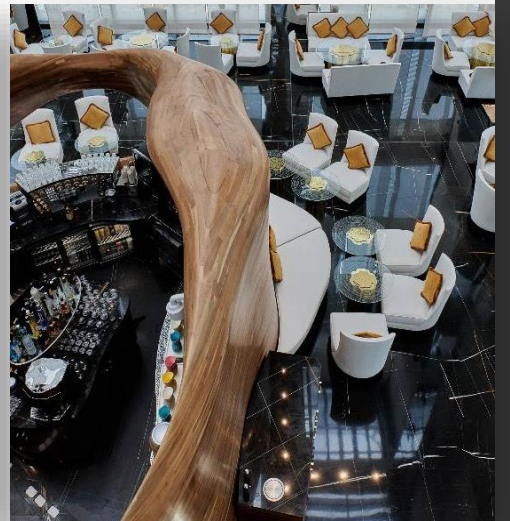
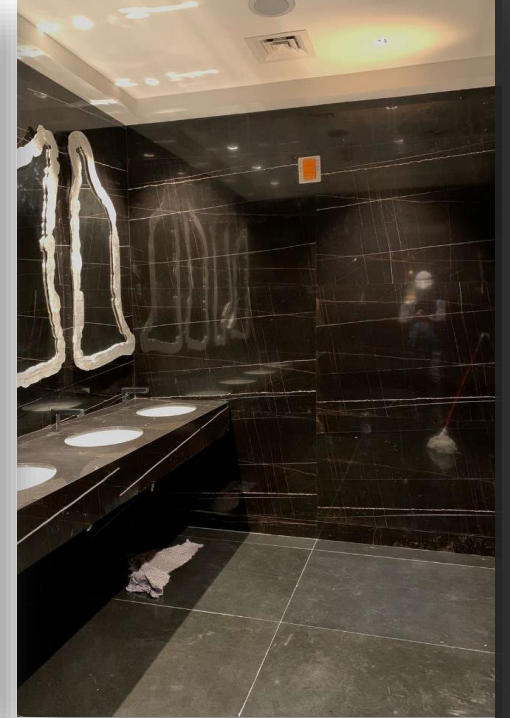
Printemps



2022 | Completed Project

Banyan Tree

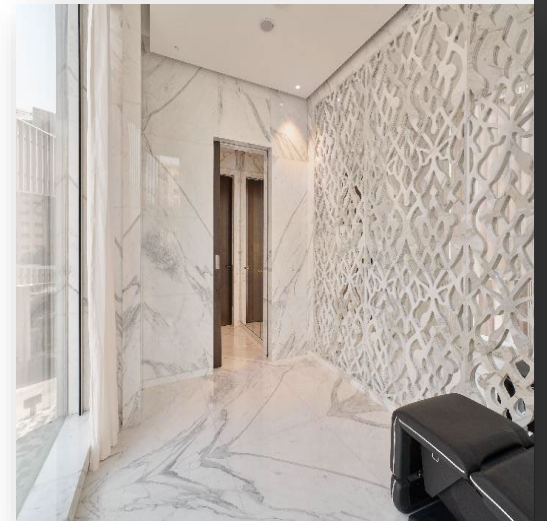
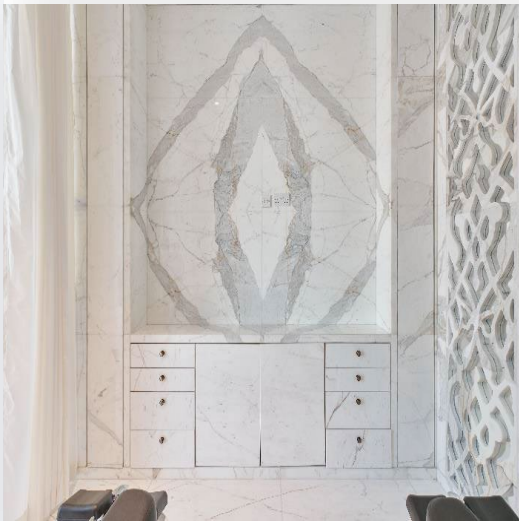
18





2022 | Completed Project

Banyan Tree



C O N S O L
Architectural Contracting



2022 | Completed Project

Banyan Tree

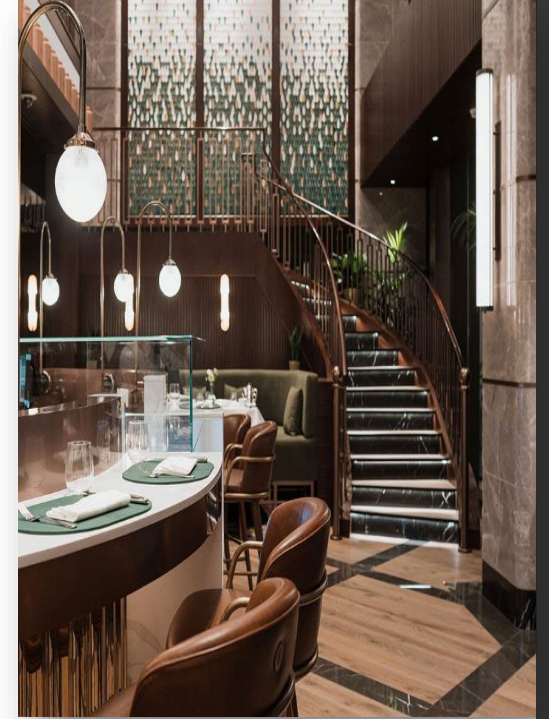
Georgian Cuisine



2022 | Completed Project

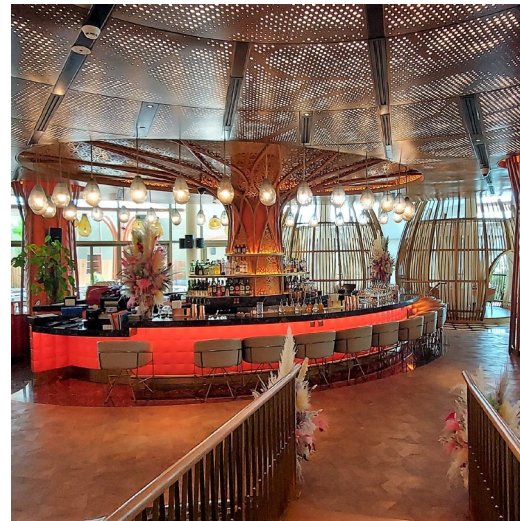
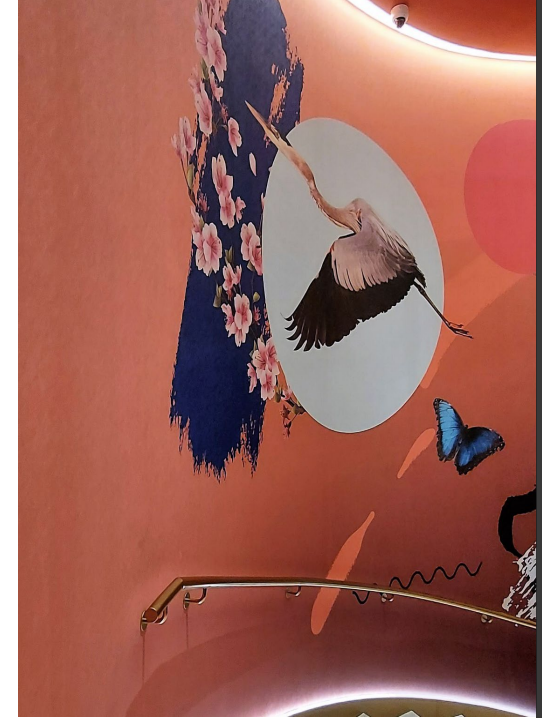
Qatar airways

Harrods
Tea Room



2022 | Completed Project

Waldorf Astoria



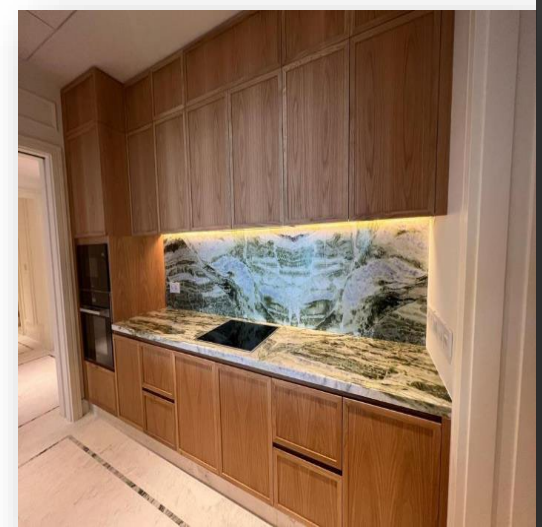
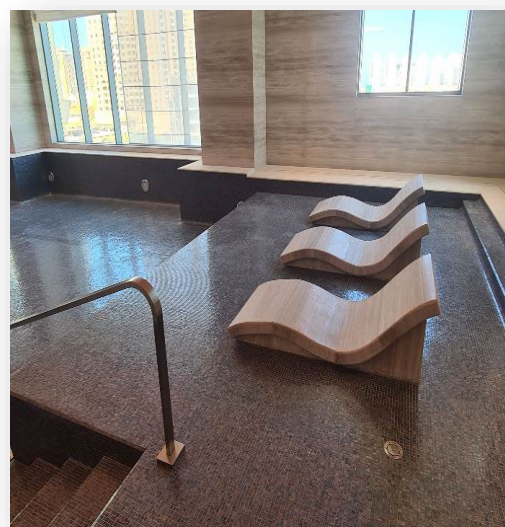
2022 | Completed Project

Four Seasons Residence



2022 | Completed Project

Four Seasons Residence





2022 | Completed Project

Four Seasons Residence

25



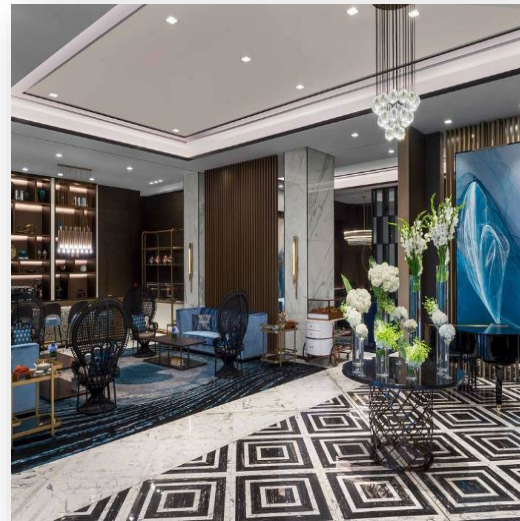
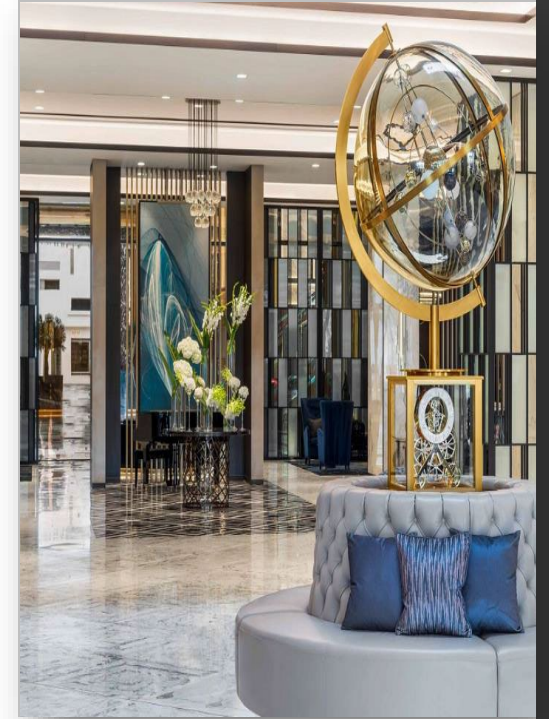
CONSOL
Architectural Contracting



25

2022 | Completed Project

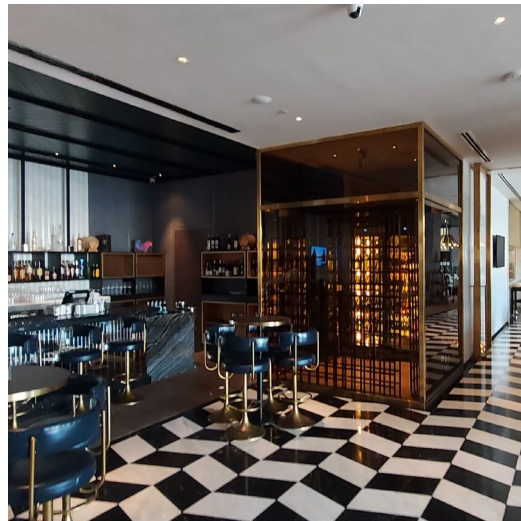
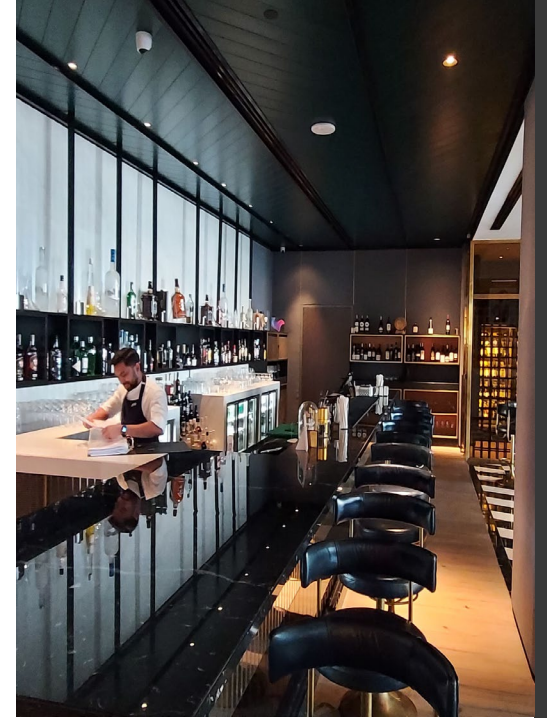
Waldorf Astoria
Kuwait





2020 | Completed Project

Rixos Doha

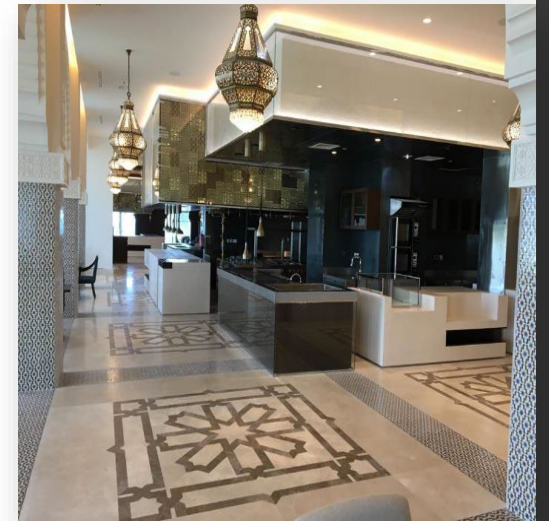
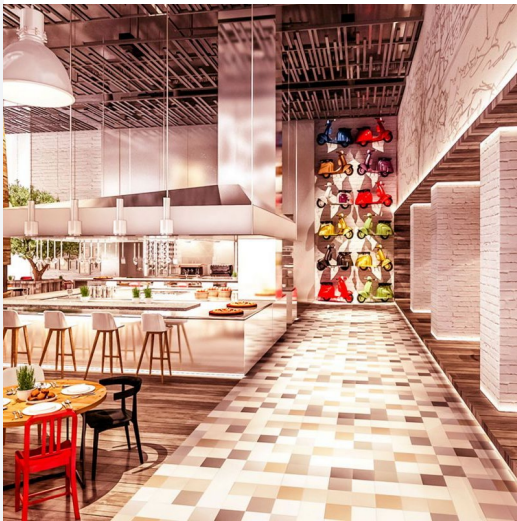


CONSOL
Architectural Contracting



2019 | Completed Project

Hilton Resort - Salwa



CONSOL
Architectural Contracting



2019 | Completed Project

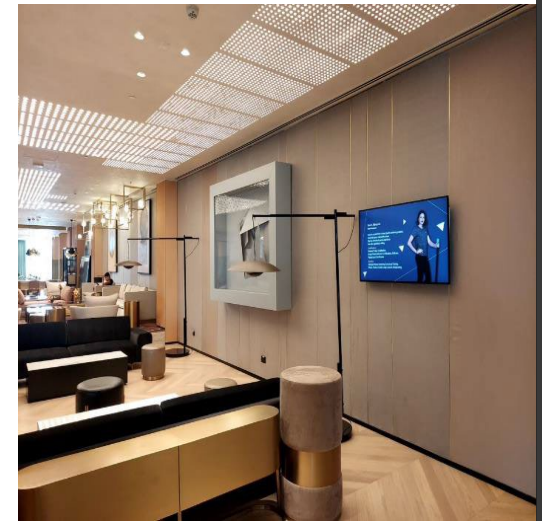
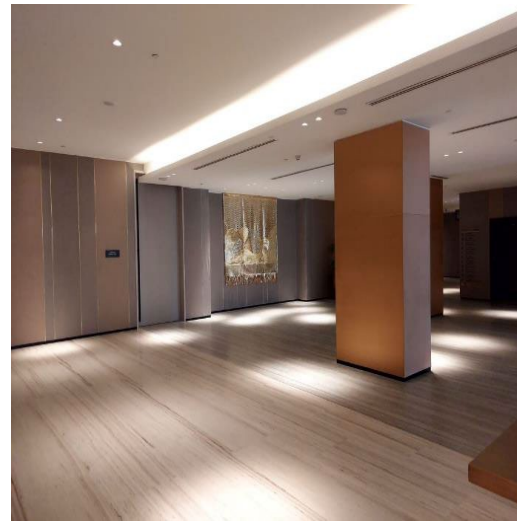
Hilton Resort - Salwa

29



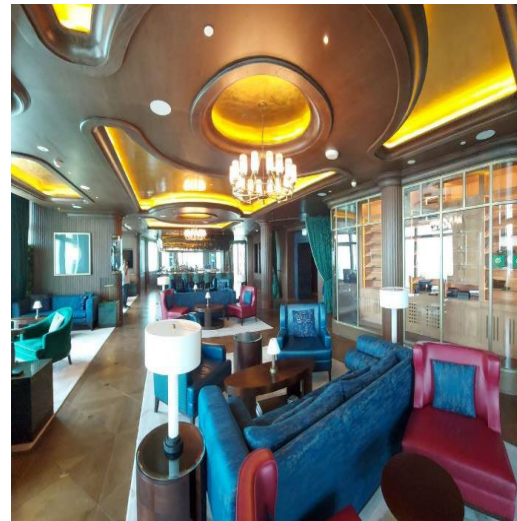
2020 | Completed Project

Rixos Doha



2022 | Completed Project

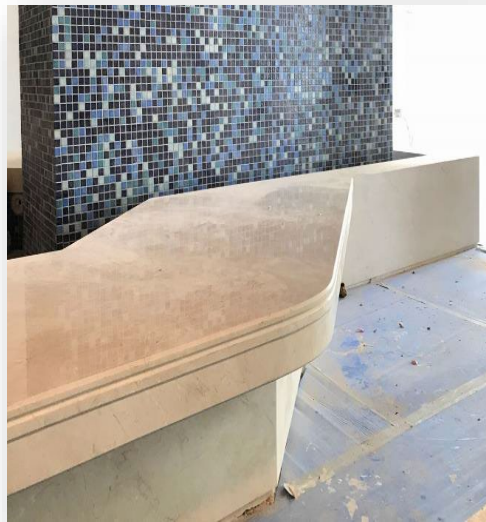
Waldorf Astoria Lusail



2018 | Completed Project

Shaza Kempinski

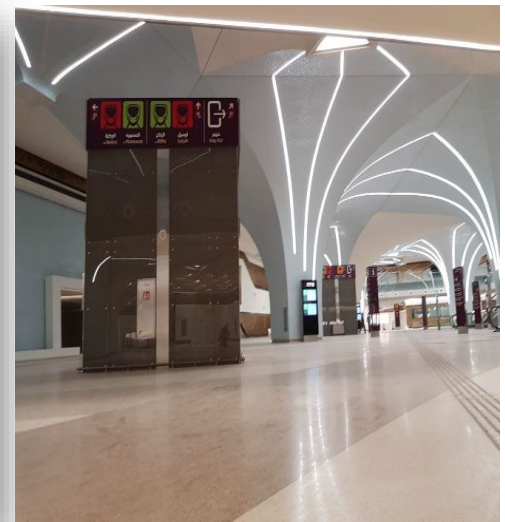
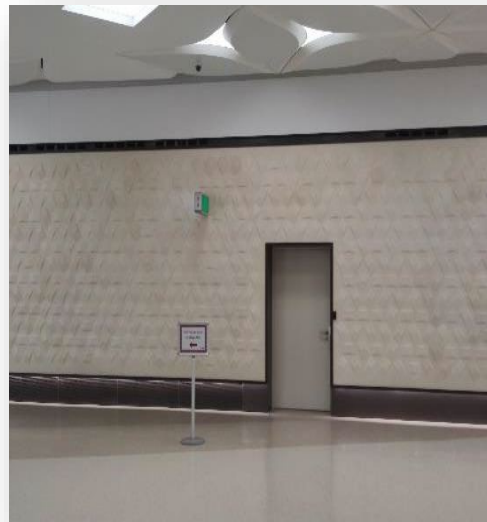
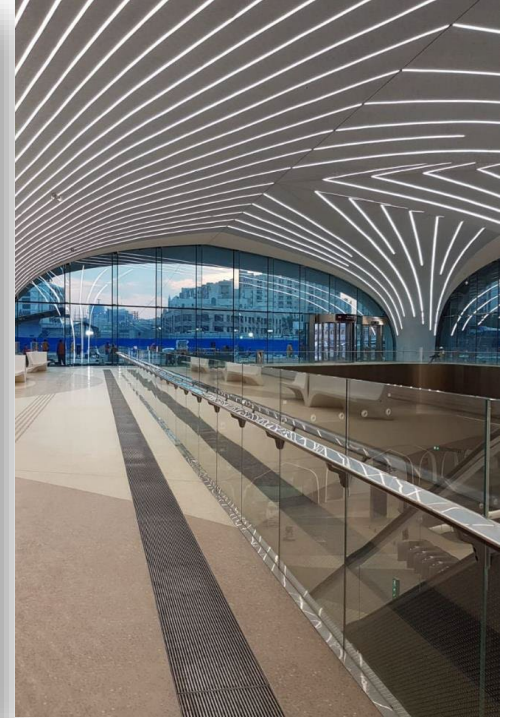
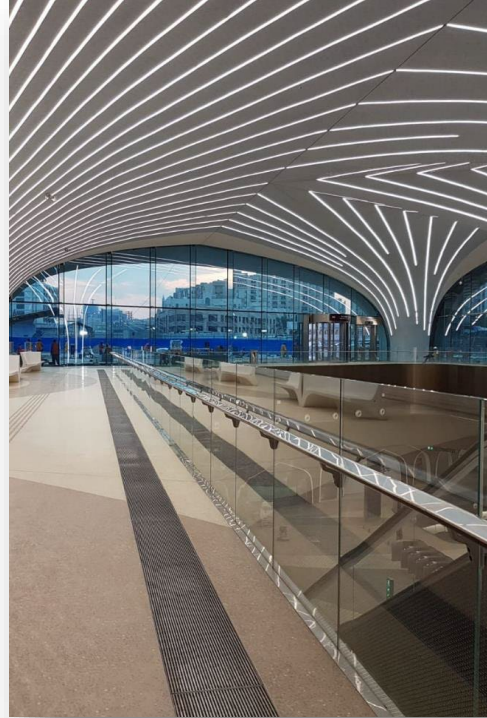
32



2022 | Completed Project

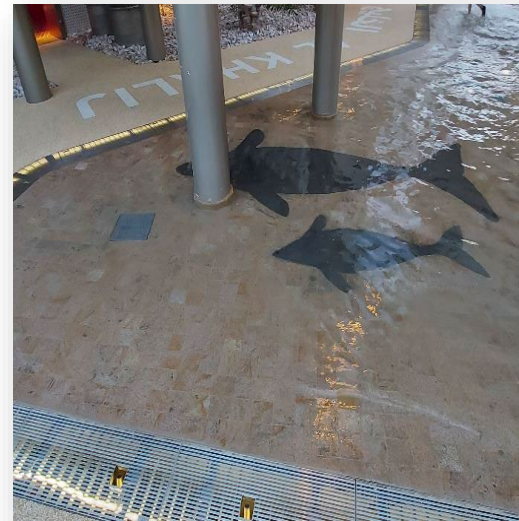
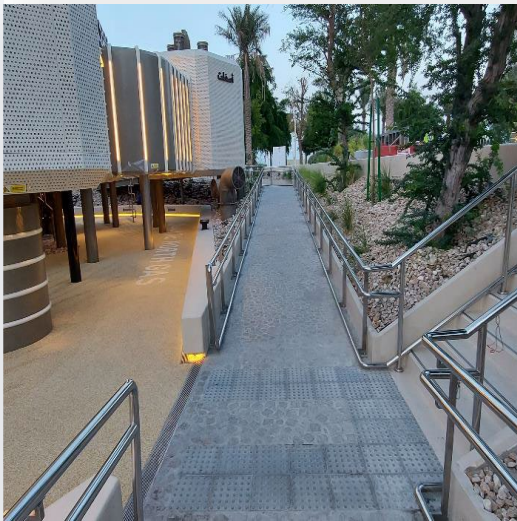
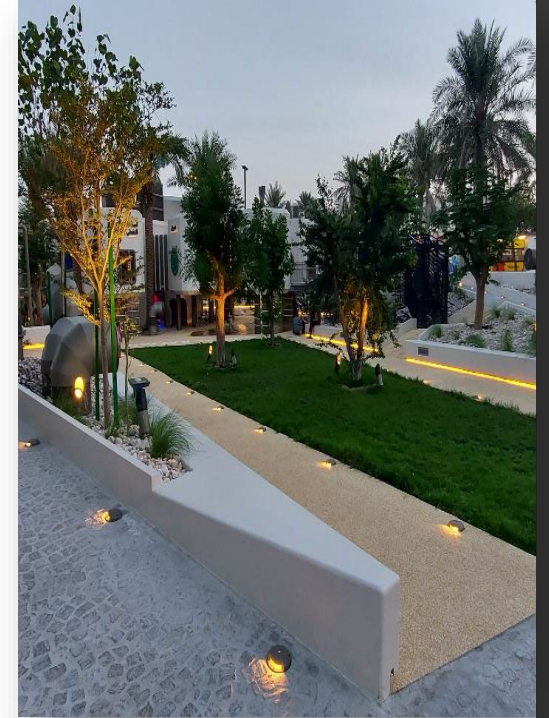
Metro Station

33



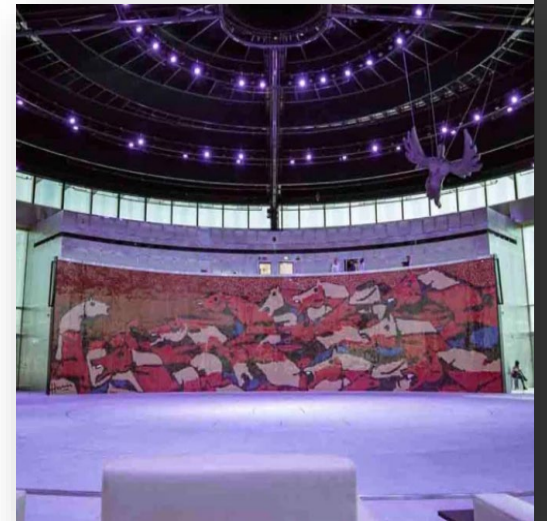
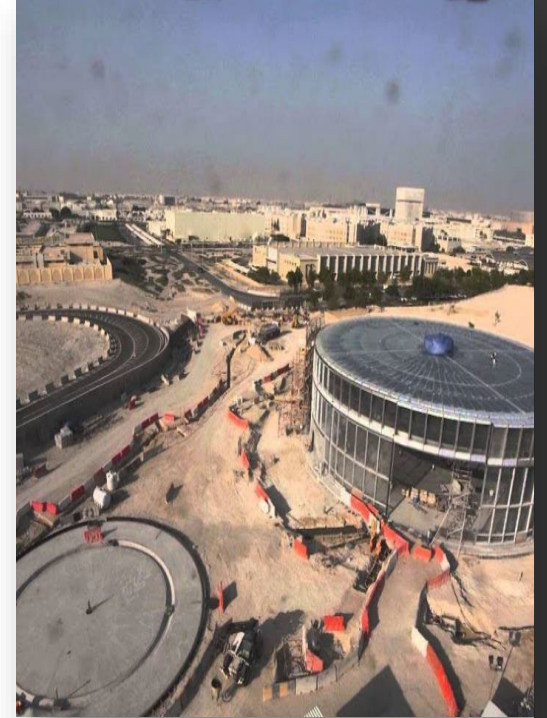
2022 | Completed Project

National Museum
Of Qatar
Children Museum



2016 | Completed Project

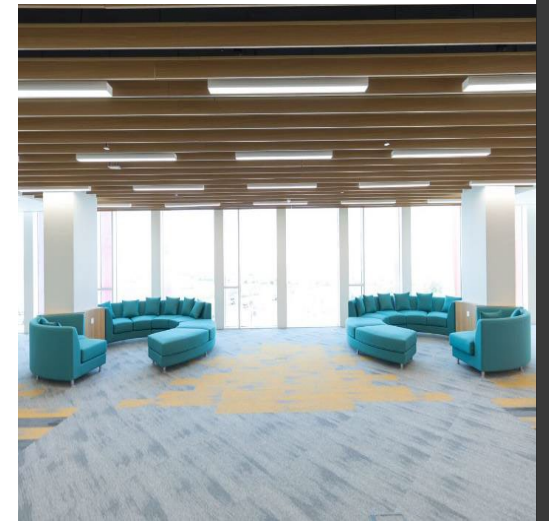
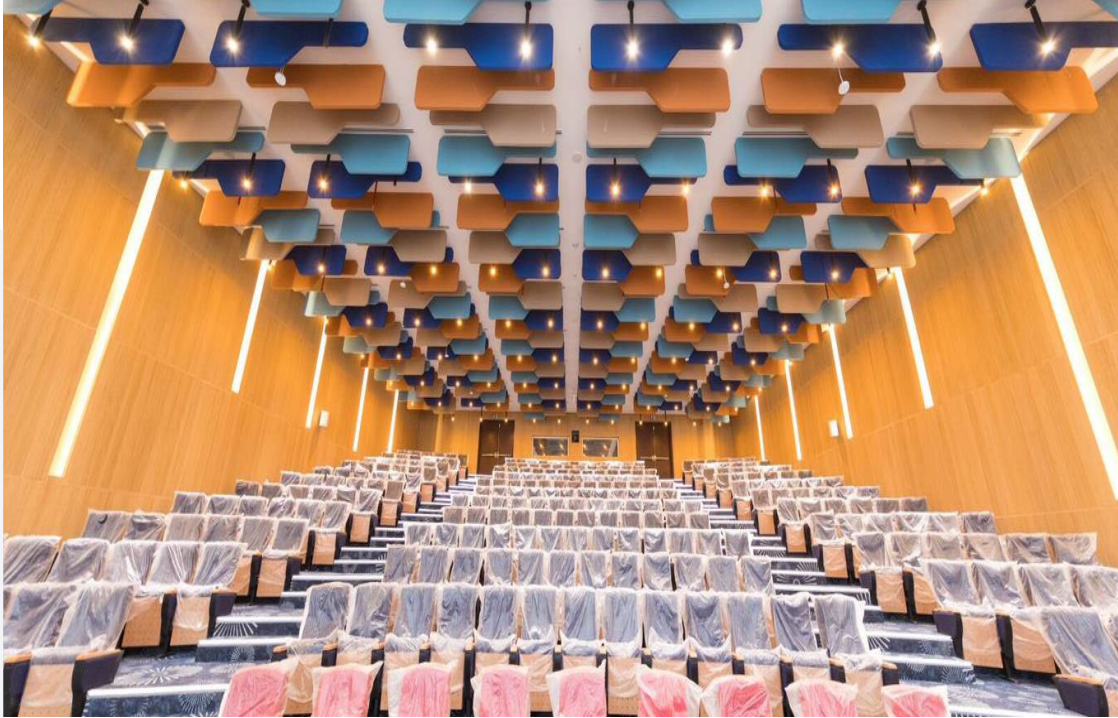
Seero Fi Ardhe Carousel





2018 | Completed Project

Grand Zone

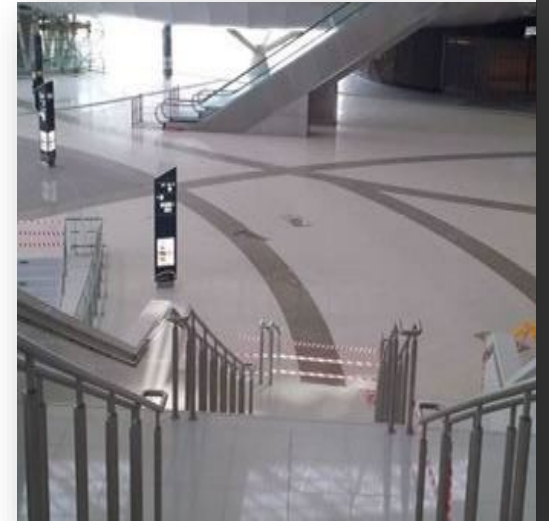


CONSOL
Architectural Contracting



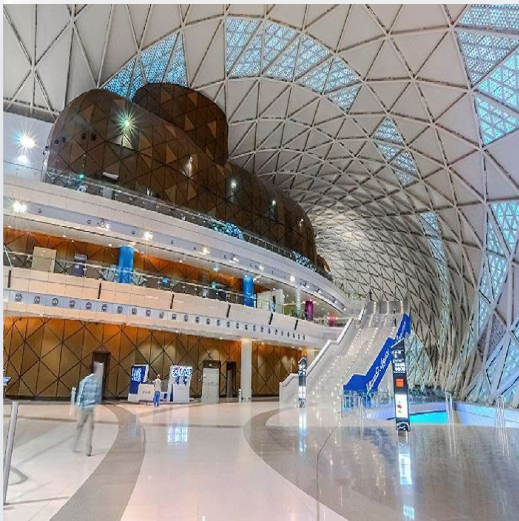
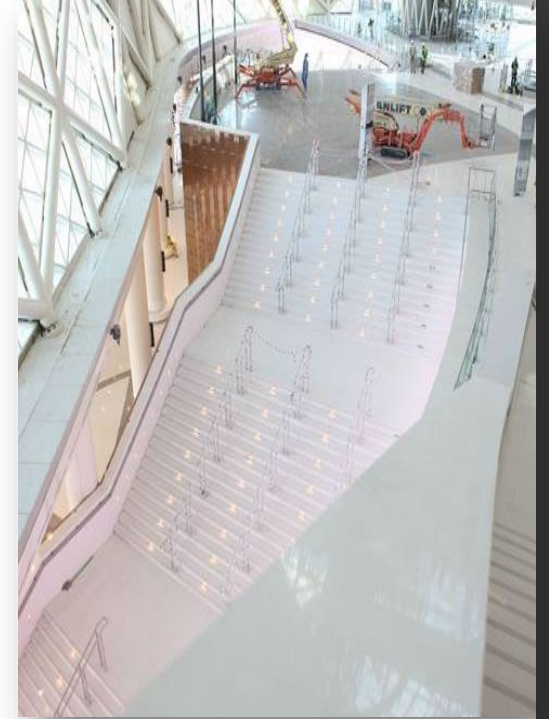
2014 | Completed Project

Lusail Handball Stadium



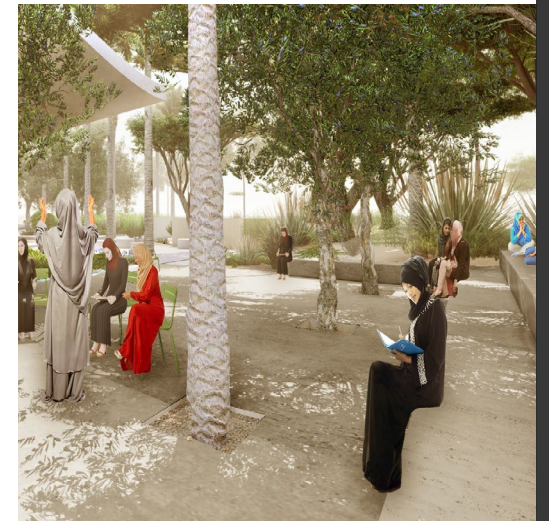
2014 | Completed Project

Lusail Handball Stadium



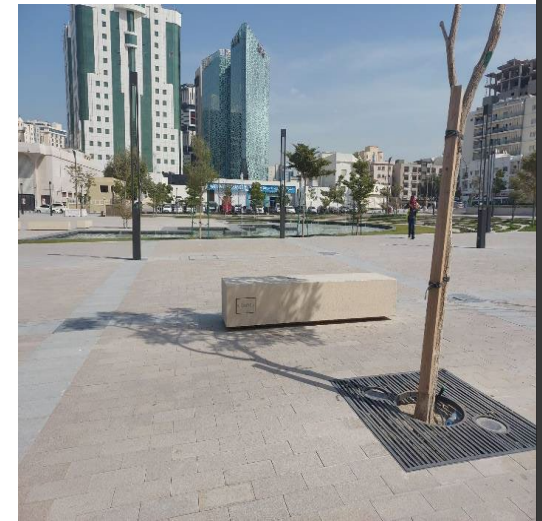
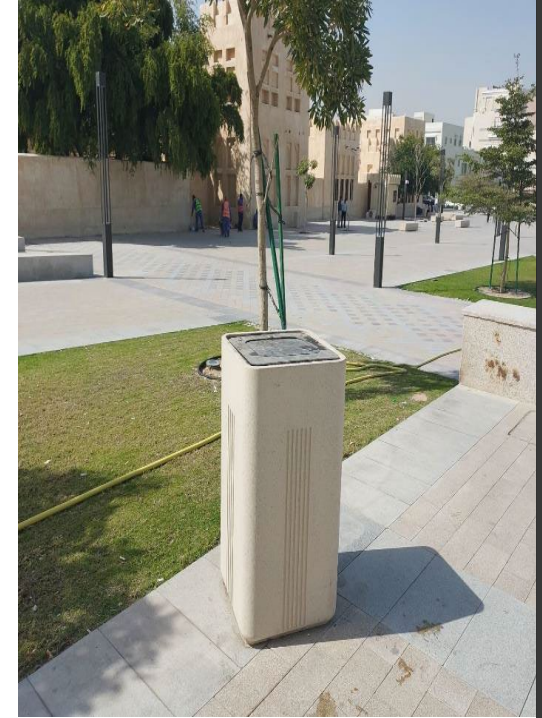
2022 | Completed Project

CCEC IFC
Outdoor Furniture



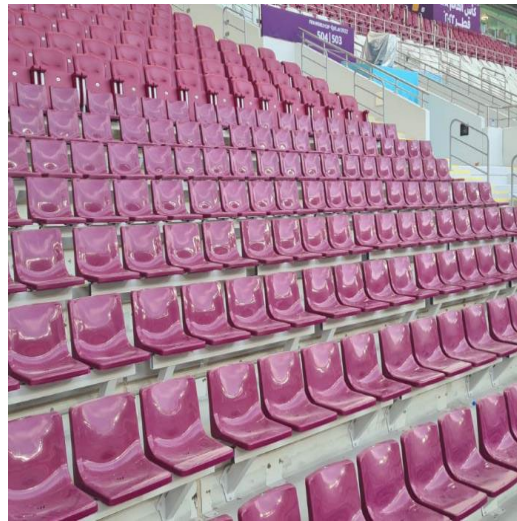
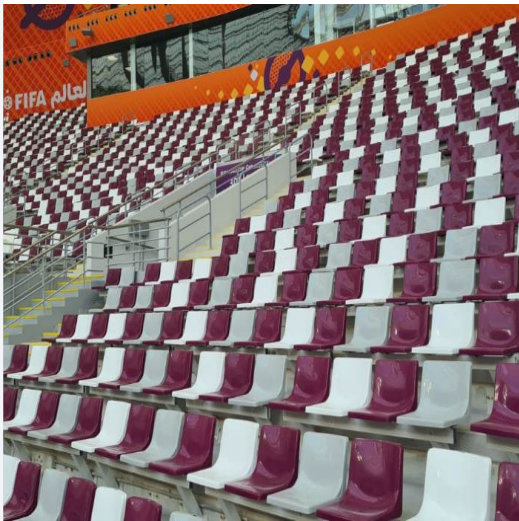
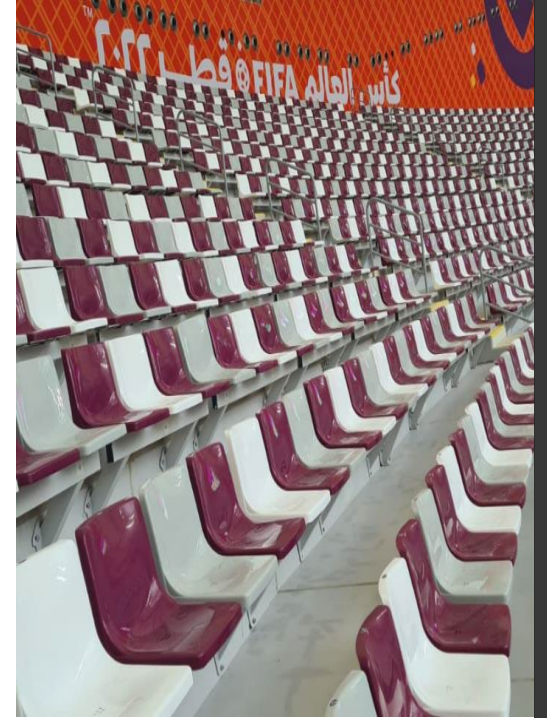
2022 | Completed Project

Doha Corniche Beautification



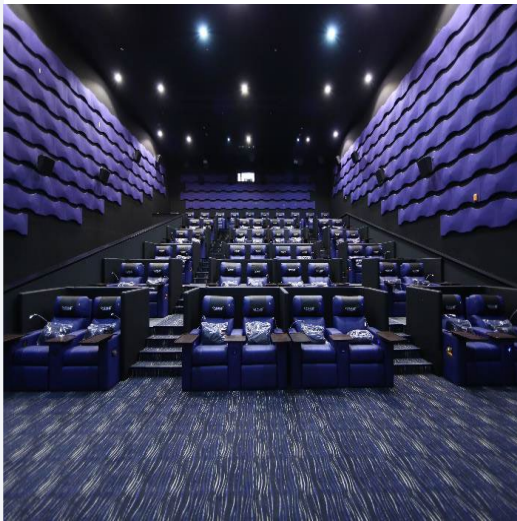
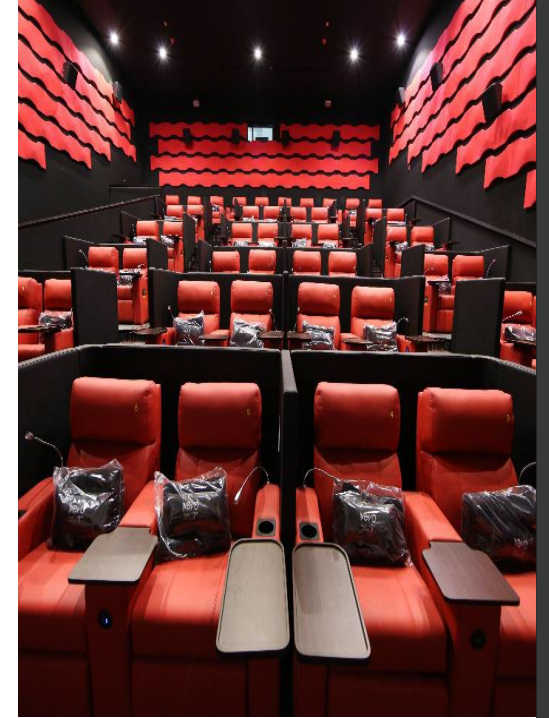
2022 | Completed Project

Khalifa Stadium



2020 | Completed Project

NOVO Cinema Mall of Qatar



Formula 1 Circuit

Description

The circuit and its components are going to be upgraded in order to fulfil all current requirements for carrying on the international racing activities and events. For this the Designers Tilke GmbH Co. & KG in cooperation with **Ashghal** - Public Works Authority will undertake the upgrade of the racetrack with all associated facilities and, especially, all motorsport related buildings like the pit building and the paddock area, grandstands, etc.



Lusail Plaza Towers

Description

Foster + Partners latest project for Qatar, a 1.1 million-square-meter landmark development consisting of four high-rise buildings.

Lusail Towers is envisioned as a “catalyst for a new central business district in the city”.

Creating a new downtown district that is sensitive to climate and linked to a new transportation hub, Foster +

Partners unveiled Lusail Towers, a development of four high-rises for Qatar. The project that puts in place two towers at 70 stories, and two at 50-stories-high, arranged symmetrically around a central plaza, will host the headquarters for the Qatar National Bank, Qatar Central Bank, and Qatar Investment Authority alongside several other global organizations including Qatari Diar.



Fitout Contracting
Natural Stone
Architectural Finishing
Machinery & Equipment



CONSOL

ARCHITECTURAL CONTRACTING



Level 18, Faisaliah Tower
King Fahad Highway, Olaya District
P.O Box 54995, Riyadh 11524
Kingdom of Saudi Arabia

شركة كونسول العربية للمقاولات المحدودة،



info.ksa@consolgroup.net
www.consolgroup.net

رقم سجل تجاري 1010871350



Phone number: 011 490 3703

رقم المنشأة لدى الغرفة التجارية 811644،

الرياض، المملكة العربية السعودية



note:

This is a presentation with no commercial value.
This is not a legal document . All copyrights are protected by
Law